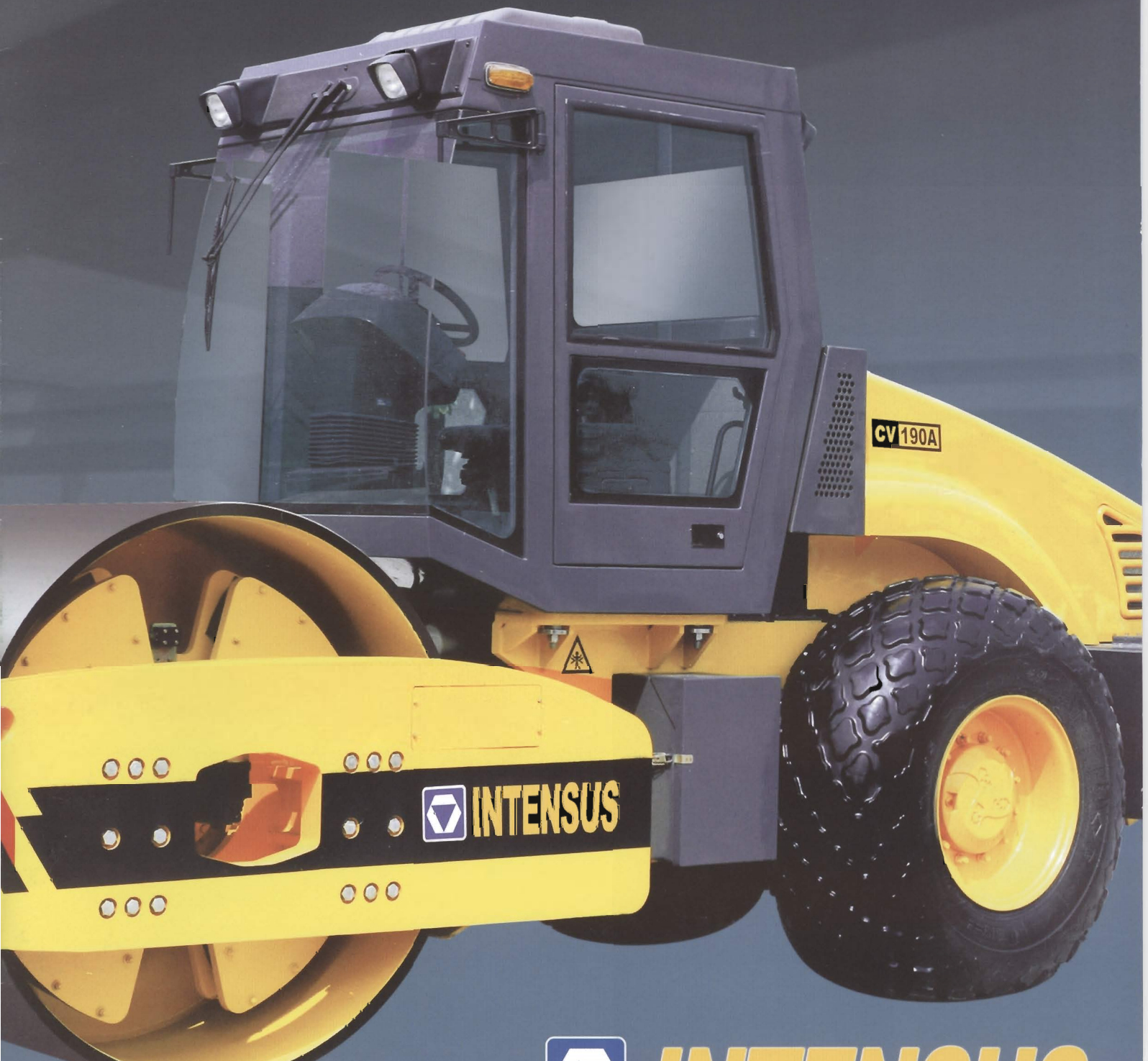


# CV190

Series Vibratory Roller



Operating Weight: 41667 lb  
Engine Power: 190 hp



XCMG

# INTENSUS

# CV190

FULLY HYDRAULIC  
SINGLE DRUM  
VIBRATORY ROLLER



## SPECIFICATIONS



### Engine:

Deutz BF6L913C

Four stroke cycle, Turbo-charged, direct injection, inline diesel engine.

Rating at	SAE	Metric
Gross Power	190hp	141kW
Net Power	190hp	141kW
Governed Speed	2500rpm	2500 rpm
Peak Torque (1500 rpm)	509 lb·ft.	690N·m
Nominal Torque Rise	22%	22%



### Transmission:

Hydrostatic  
Infinitely variable speed.



### Vibratory drum:

Fully hydraulic power vibration with dual amplitudes. Vibratory drum driven by hydraulic motor and Torque Hub.



### Drive axle:

Main reduction with rim reduction.

### Main characteristic:

The Intensus CV190 series roller is a self-propelled vibratory roller designed for compaction work on airports, and other major projects. The CV190 series is available in two versions for different materials and types of work. It is efficient in compacting crushed material, gravel, till, sand, clay as well as cement and asphalt bound materials.



### Brake system:

Service brake:	Static hydraulic system
Parking brake:	Static hydraulic system, Static oil transmission acting on brakes at drum and drive axle



### Electrical system:

24V DC, (2) 12 volt batteries.



### Work device hydraulic system:

Transmission and vibration system are closed hydraulic circuit, steering system is open hydraulic circuit.

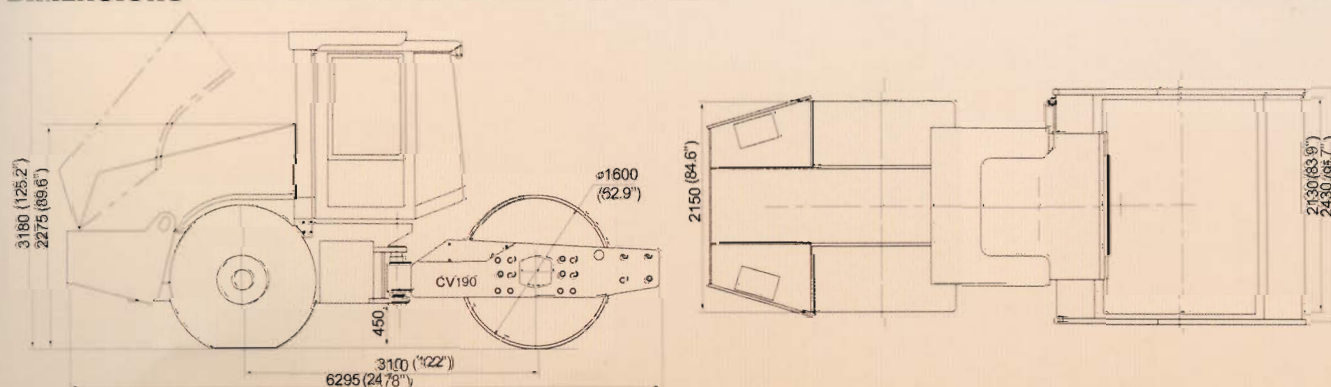


### Cab:

Enclosed ROPS CAB with Tinted Glass and Air Conditioning.

SPECIFICATIONS	UNIT	SPECIFICATIONS	
Type		CV190D	CV190PD
Operating weight	t/lb	18.9/41,567	18.9/41,567
Tractor module weight	t/lb	6.1/13,448	6.1/13,448
Drum module weight	t/lb	12.8/28,219	12.8/28,219
Tyre specification		23.1-26-12PR	23.1-26-12PR
Theoretical grade ability	%	55	55
Width of drum	mm/in	2130/83.86	2130/83.86
Diameter of drum	mm/in	1600/62.99	1600/62.99
Thickness of drum shell	mm/in	40/1.57	35/1.38
Static linear load	N/cm/lb/in	589/336.55	
Amplitude: High/Low	mm/in	1.80/0.071; 0.78/0.03	1.80/0.071; 0.78/0.03
Frequency	Hz	28/35	28/35
Centrifugal force at high amplitude	kN/lb	385/86,609	385/86,609
Centrifugal force at low amplitude	kN/lb	260/58,489	260/58,489
Speed range	km/h/mph	0~12/0~7.46	0~12/0~7.46
Ground clearance	mm/in	450/17.72	450/17.72
Inner turning radius	mm/in	4740/186.61	4740/186.61
Outer turning radius	mm/in	6870/270.47	6870/270.47
Min. lateral overhang	mm/in	150/5.91	150/5.91
Engine model		Deutz BF6L913C	
Rated power	kW/rpm	141/2500	
Rater torque	N·m	690	
Total displacement	cm <sup>3</sup>	6180	
Specific fuel consumption	g/kW·h	205	
Fuel tank capacities	l/gal (U.S)	230/60.7	
Hydraulic oil capacities	l/gal (U.S)	230/60.7	

## DIMENSIONS



# ECM

## EAST COAST MACHINERY

550 W. Trout Run Rd. Ephrata PA 17522

PH: 717-733-3976 FAX: 717-733-8531

[www.eastcoastmachinery.us](http://www.eastcoastmachinery.us)

contact: [sales@eastcoastmachinery.us](mailto:sales@eastcoastmachinery.us)



### Intensus Engineering, Inc. (LLC)

3691 Route 9. Cold Spring, New York 10516, U.S.A.

Tel: (845) 265-6000

Fax: (845) 265-0022

Email: [info@intensus.com](mailto:info@intensus.com)

Website: [www.intensus.com](http://www.intensus.com)